

# Ocean Cruising

*SV Jule III*

Bob and Ann Todd, Captains (100 ton)

*Presented to Flotilla 10-06  
13 September, 2011*



# Overview

- ➔ Who we are
- ➔ Summarize last season passage
- ➔ What worked and what didn't
- ➔ List our 'must-have' equipment
- ➔ Questions and answers



# Who we are



- Ann and Bob Todd
- USCG Masters (100 ton)
- Cruised over 10,000 nm
- 'Real' work with NIH
- Homeport in ILM and DCA
- Members of cruising clubs:

- ➔ SSCA
- ➔ OCC
- ➔ WWRCC



## Jule III

- 38' Laurin ketch
- Built in Sweden/Germany
- One of 12 built
- Ours for 16 years
- [www.jule-iii.com](http://www.jule-iii.com)



# Last Season



## The Cruise

- ➔ Chesapeake → ILM
- ➔ ILM → Sint Maarten
- ➔ SM ↔ St Kitts
- ➔ SM - VIs - PR - DR - Bahamas - US
- ➔ Back to ILM



# The Passage

## Chesapeake → ILM

### First Leg\*

- ➔ Deale → Solomons
- ➔ Solomons → Deltatville
- ➔ Deltaville → Norfolk
- ➔ Norfolk → Elizabeth C
- ➔ EC → Hobucken
- ➔ Hobucken → ILM

\* Positioning for Ocean trip



Imagery ©2011 TerraMetrics

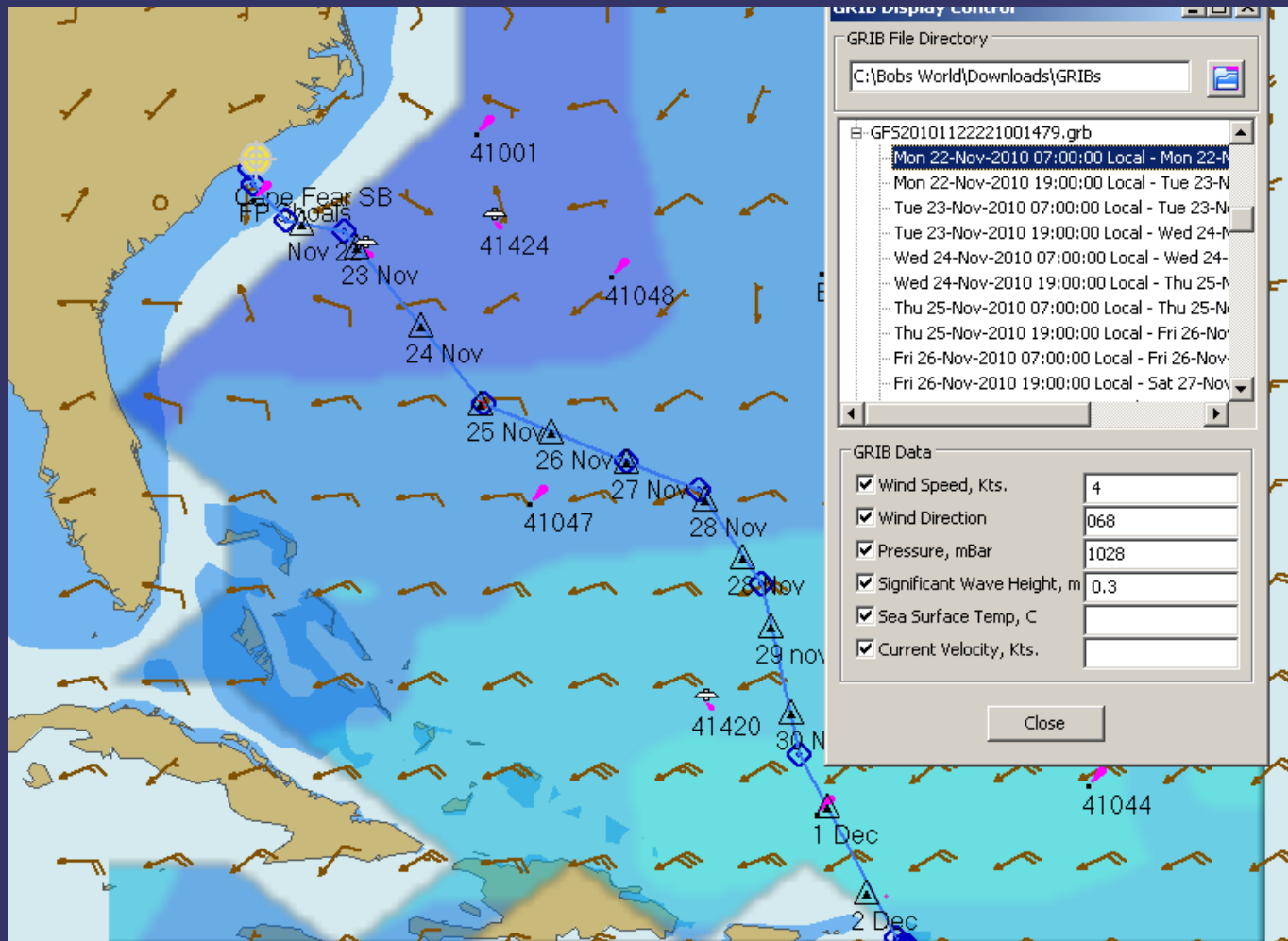


# Carolina Beach → Simpson Bay SM

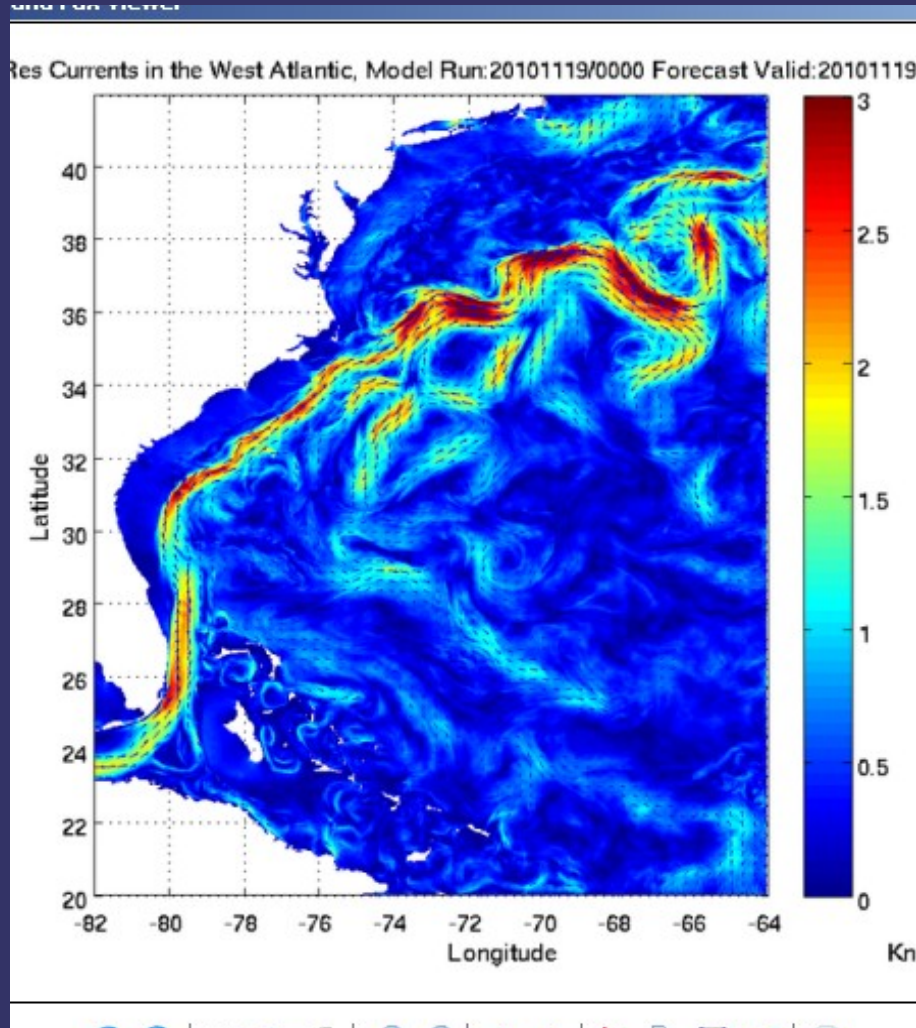
21 Nov 2010 – 3 Dec 2010



# *Doldrums in the Stream*



# The Gulf Stream

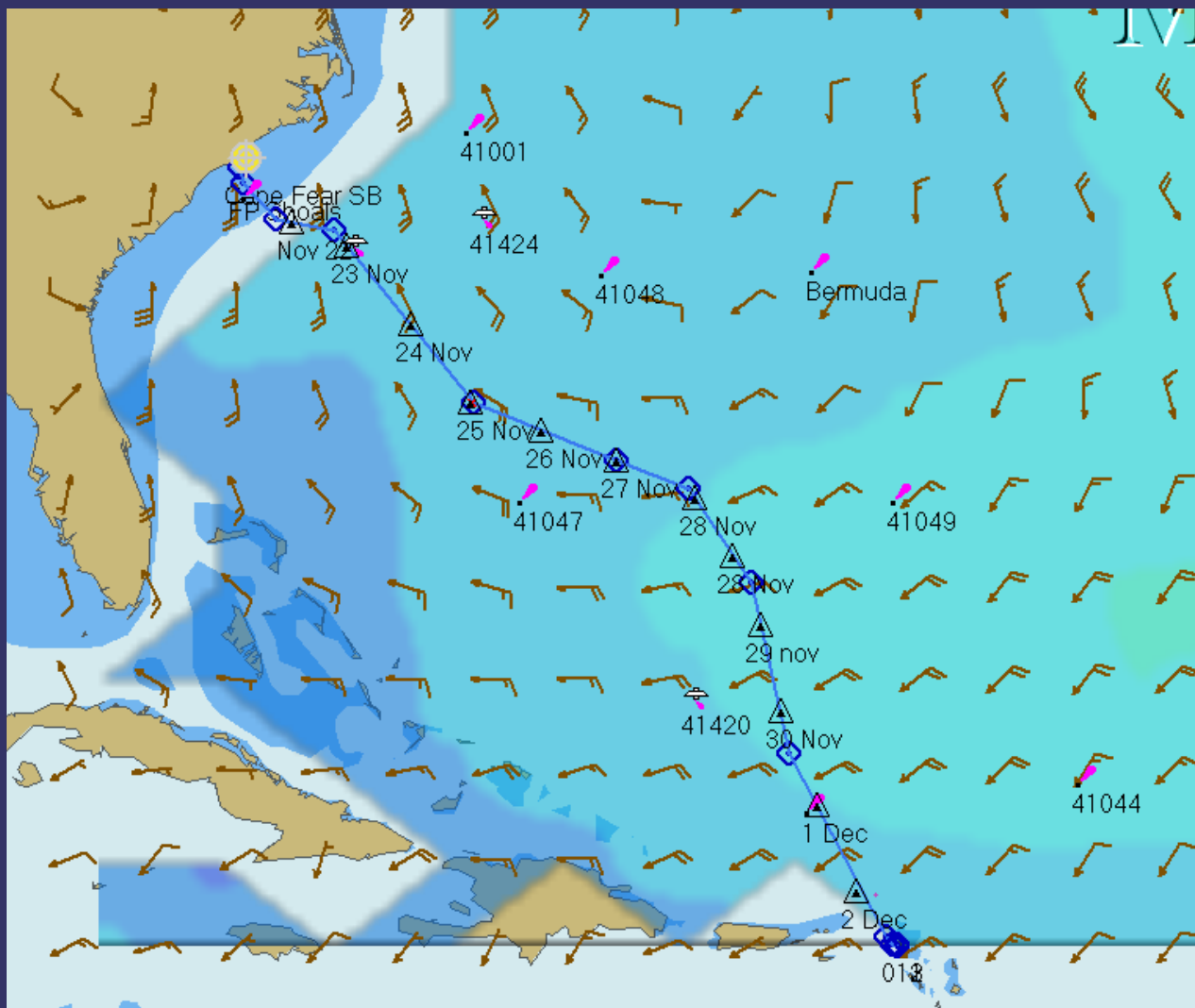


*The Stream around here ...*

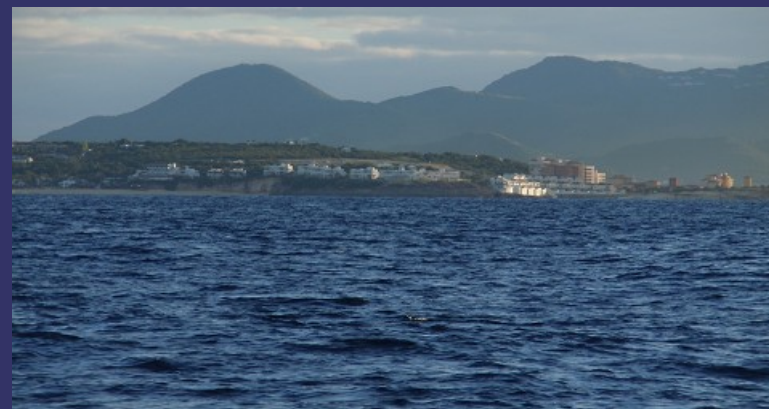
- ➔ NE winds: Bad
- ➔ Plan for 2-3 kts NE drift
- ➔ Lots of eddies
- ➔ Charleston Bump
- ➔ East of the 'east wall'; OK



# Two Days to Go: Seas 11'-13'



# Passage Pic's



# *The Trip Back*

## *Where and Thoughts*

### ➔ Where

- ➔ Sint Maarten: 'homeport' and provisioning
- ➔ St. Barts/St. Kitts: just visiting
- ➔ BVI: Sharing with Charters
- ➔ USVI: Cruising grounds
- ➔ Spanish Virgins: Culebra – likable and Latin
- ➔ Puerto Rico: the southern coast & Mona passage
- ➔ Dominican Republic: Luperon
- ➔ Bahamas (Palm Sunday in Nassau)
- ➔ Nassau → Vero Beach
- ➔ A rush to Wilmington NC



# *What didn't worked & What did (and the stuff in-between)*

- Anchor chain: not enough
- Dinghy motor in far away places (e.g., spun prop)
- Water maker: died after 10 yrs
- Wind generator: died several times (after 10 yrs)
- Cooking/eating in high sea states
- Holding tanks and pump outs (outside USA)
- Dirty fuel in out of way places



# *What didn't worked & What did*

## *(and the stuff in-between)*

- Watch Standing (normal & severe wx): 3/9; 3/3
- Communications: SSB, Global Cell, and WiFi
- Anchoring: Big Bruce and 100' chain/100' line
- Cruising lifestyle: once we got used to it again
- Galley: at anchor but lots of eating out
- We are still Married
- Worst case sail handling (max reef before it come)
- Life at Anchor
- Local Boater Option



# *What didn't worked & What did (and the stuff in-between)*

- Anti fouling: Not so good in the tropics
- Diving on the boat: bloody but effective
- Customs, Immigration, Agriculture, and Harbour control
- Sailing: trade winds, roll control, too much, not enough
- Mooring balls: \$\$'s but easy (Golden Eagle in USVI)
- Water: Mostly good but not so much at Luperon
- Fuel: Hit or miss for clean diesel
- Real Mail: Awful in Sint Maarten; good elsewhere.



# Technical Considerations



# *We Don't Leave Coastal Waters Without ...*

## ➔ Critical

- ➔ EPIRB
- ➔ Chartplotter/GPS
- ➔ SSB
- ➔ Radar
- ➔ Life Raft
- ➔ Current Charts

## ➔ Important

- ➔ SSB Pactor Modem
- ➔ AIS
- ➔ Spares
- ➔ Watch Schedule
- ➔ Float Plan/Pos Rep

## ➔ Nice to Have

- ➔ Satellite Radio
- ➔ Movies
- ➔ Books
- ➔ Sleep



# 406 MHz EPIRB



- 243/121 MHz obsolete
- Battery cautions
- CAT I or CAT II
- Registration
- Recalls



# *GPS and Chartplotters*

- Gotta have one
- Handheld or fixed mount
- Chartplotter : hardware or PC-based
- Non US charts are good, bad, or both
- US charts are free (raster and vector)
- Briefing uses a free chartplotter + hand GPS



# SSB and Options

*Not as important if you have a Sat phone*

## ➔ Advantages

- ➔ Worldwide emergencies
- ➔ Regional nets
- ➔ Current weather
- ➔ Current news, sports, etc
- ➔ ***Modem capable for Internet***
- ➔ Float Plan/Position Rep



## ➔ Considerations

- ➔ Installation requires stuff
- ➔ Easier for sailboats
- ➔ Not cheap (\$ 2k - 3k)
- ➔ Ham and/or Marine



# SSB + Modem + PC



+



+



## ➔ Advantages (worldwide)

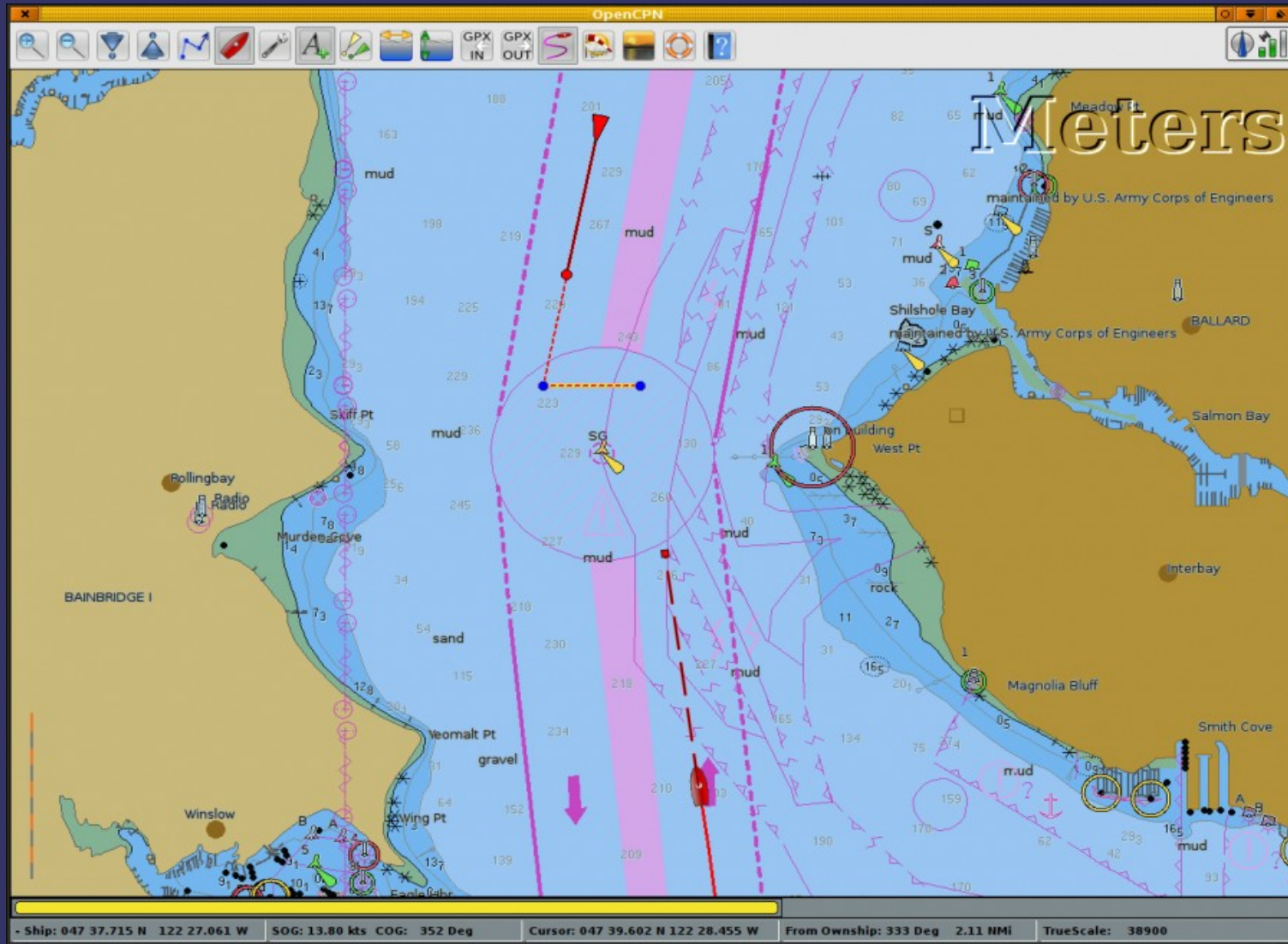
- ➔ Retrieve WeFAX
- ➔ All flavors of weather incl GRIB
- ➔ Email
- ➔ Limited Web Access

## ➔ Issues

- ➔ More \$'s (1k – 1.5k)
- ➔ Free if Ham or \$ 250/yr
- ➔ Learning curve



# Automated Identification System (AIS)



# *Our Toys*

## ➔ Enroute Toys

- ➔ Sirius/XM Radio
- ➔ Mobile DVD Player
- ➔ SSB for entertainment also

## ➔ Why do we need Toys

- ➔ Little to no FM stations in the Islands
- ➔ Little to no AM stations in the Islands
- ➔ No Broadcast TV most places



# *Questions and Comments*

